

# Notturmo

Håkan Theorin  
(2017)

♩ = 76

Violoncello

Pianoforte

Handwritten musical score for the first system. The Violoncello part is on a single staff with a treble clef and a 4/4 time signature. The Pianoforte part consists of two staves with a grand staff (treble and bass clefs) and a 4/4 time signature. Both parts begin with a dynamic marking of *p* (piano). The key signature has one sharp (F#). The first measure of the Violoncello part contains a half note G4, a quarter note A4, and a quarter note B4. The Pianoforte part features a complex chordal texture with various accidentals.

Handwritten musical score for the second system. The Violoncello part continues with a melodic line, marked with a *3* (triple) and a *b* (flat). The Pianoforte part continues with a complex chordal texture, marked with a *b* (flat) and a *b* (flat). The key signature has one sharp (F#).

Handwritten musical score for the third system. The Violoncello part continues with a melodic line, marked with a *mf* (mezzo-forte) dynamic. The Pianoforte part continues with a complex chordal texture, marked with a *mf* (mezzo-forte) dynamic. The key signature has one sharp (F#).

2

9

Handwritten musical notation for measures 9-11. The top staff is a single melodic line in G major (one sharp) and 4/4 time. Measure 9 starts with a piano (p) dynamic and contains a half note G4, a quarter note A4, a quarter note B4, and a half note C5. Measure 10 contains a half note D5, a quarter note E5, a quarter note F#5, and a half note G5. Measure 11 contains a half note A5, a quarter note B5, a quarter note C6, and a half note B5. The bottom two staves are empty.

12

Handwritten musical notation for measures 12-14. The top staff continues the melody. Measure 12 contains a half note A5, a quarter note B5, a quarter note C6, and a half note B5. Measure 13 contains a half note A5, a quarter note G5, a quarter note F#5, and a half note E5. Measure 14 contains a half note D5, a quarter note C5, a quarter note B4, and a half note A4. The bottom two staves are empty.

15

Handwritten musical notation for measures 15-17. The top staff continues the melody. Measure 15 contains a half note G4, a quarter note F#4, a quarter note E4, and a half note D4. Measure 16 contains a half note C4, a quarter note B3, a quarter note A3, and a half note G3. Measure 17 contains a half note F#3, a quarter note E3, a quarter note D3, and a half note C3. The bottom two staves are empty.

3

18

21

24

27

30

33

5

36

Handwritten musical score for measures 36-38. The score is written on three staves. The top staff is a single line. The middle and bottom staves are a grand staff (treble and bass clefs). The key signature has one flat (B-flat). Measure 36 starts with a treble clef and a key signature change to one flat. The melody in the middle staff consists of eighth and quarter notes with various accidentals. The bass staff has chords and some ledger lines. Measure 37 continues the melody. Measure 38 ends with a double bar line.

39

Handwritten musical score for measures 39-41. The score is written on three staves. The top staff is a single line. The middle and bottom staves are a grand staff. The key signature has one flat. Measure 39 starts with a treble clef. The melody in the middle staff continues. The bass staff has chords. Measure 40 continues the melody. Measure 41 ends with a double bar line.

42

Handwritten musical score for measures 42-44. The score is written on three staves. The top staff is a single line. The middle and bottom staves are a grand staff. The key signature has one flat. Measure 42 starts with a treble clef. The melody in the middle staff continues. The bass staff has chords. Measure 43 continues the melody. Measure 44 ends with a double bar line. There are dynamic markings 'mf' in measures 43 and 44.

45

Handwritten musical score for measures 45-47. The system consists of three staves: a top staff with a treble clef and a key signature of one sharp (F#), and two bottom staves with a grand staff (treble and bass clefs). The music features various note values, including eighth and sixteenth notes, and rests. There are slurs and ties across measures. The key signature changes to one flat (Bb) in measure 47.

48 acc.

Handwritten musical score for measures 48-50. The system consists of three staves: a top staff with a treble clef and a key signature of one flat (Bb), and two bottom staves with a grand staff. The music continues with various note values and rests. There are slurs and ties across measures. The key signature changes to one sharp (F#) in measure 50.

51 (acc.)  $\text{♩} = 100$

Handwritten musical score for measures 51-53. The system consists of three staves: a top staff with a treble clef and a key signature of one sharp (F#), and two bottom staves with a grand staff. The music continues with various note values and rests. There are slurs and ties across measures. The key signature changes to one flat (Bb) in measure 53. The tempo marking "♩ = 100" is present above the first staff.



54

mf

mf

57

ff

ff

60

f

f

8

63

*ff*

66

*mf*

*mf*

69



Handwritten musical score system 1, measures 72-74. The system includes a vocal line and a piano accompaniment. Measure 72 is marked with a '72' and a fermata. The piano part features complex chords and arpeggios.

Handwritten musical score system 2, measures 75-77. The system includes a vocal line and a piano accompaniment. Measure 75 is marked with a '75'. The piano part continues with complex chords and arpeggios.

Handwritten musical score system 3, measures 78-80. The system includes a vocal line and a piano accompaniment. Measure 78 is marked with a '78'. The piano part features complex chords and arpeggios, with a 'ff' (fortissimo) dynamic marking.

81

mf

mf

84

mf

87

ff

ff

//

90

Handwritten musical score for measures 90-92. The system consists of three staves. The top staff is a single melodic line in treble clef with a key signature of one flat (B-flat) and a 2/4 time signature. It contains measures 90, 91, and 92. The middle and bottom staves are a grand staff (treble and bass clefs) with a key signature of one flat. They contain chords and arpeggiated figures for measures 90, 91, and 92. Measure 90 features a forte (f) dynamic marking. Measure 91 has a crescendo hairpin. Measure 92 has a decrescendo hairpin.

93

Handwritten musical score for measures 93-95. The system consists of three staves. The top staff is a single melodic line in treble clef with a key signature of one flat and a 2/4 time signature. It contains measures 93, 94, and 95. The middle and bottom staves are a grand staff (treble and bass clefs) with a key signature of one flat. They contain chords and arpeggiated figures for measures 93, 94, and 95. Measure 93 features a forte (f) dynamic marking. Measure 94 has a crescendo hairpin. Measure 95 has a decrescendo hairpin.

96

Handwritten musical score for measures 96-98. The system consists of three staves. The top staff is a single melodic line in treble clef with a key signature of one flat and a 2/4 time signature. It contains measures 96, 97, and 98. The middle and bottom staves are a grand staff (treble and bass clefs) with a key signature of one flat. They contain chords and arpeggiated figures for measures 96, 97, and 98. Measure 96 features a forte (f) dynamic marking. Measure 97 has a crescendo hairpin. Measure 98 has a decrescendo hairpin.

99

Handwritten musical score for measures 99-101. The system consists of three staves: a single treble staff at the top and a grand staff (treble and bass) below. The music is in 2/4 time with a key signature of one sharp (F#). Measure 99 features a melodic line in the treble and a complex accompaniment in the grand staff. Measure 100 continues the melodic development. Measure 101 concludes the system with a final chord in the grand staff.

102

Handwritten musical score for measures 102-104. The system consists of three staves: a single treble staff at the top and a grand staff below. Measure 102 begins with a melodic line in the treble and a grand staff accompaniment. Measure 103 features a melodic line in the treble and a grand staff accompaniment. Measure 104 concludes the system with a final chord in the grand staff. Dynamics markings 'f' and 'ff' are present.

105

Handwritten musical score for measures 105-107. The system consists of three staves: a single treble staff at the top and a grand staff below. Measure 105 begins with a melodic line in the treble and a grand staff accompaniment. Measure 106 continues the melodic development. Measure 107 concludes the system with a final chord in the grand staff.

108

Handwritten musical score for measures 108-111. The score is written on three staves. The top staff is in treble clef, the middle in alto clef, and the bottom in bass clef. The key signature has one sharp (F#). The music features various note values, including eighth and sixteenth notes, and rests. Measure 108 starts with a treble clef and a key signature of one sharp. The piece concludes with a double bar line at the end of measure 111.

111

Handwritten musical score for measures 112-114. The score is written on three staves. The top staff is in treble clef, the middle in alto clef, and the bottom in bass clef. The key signature has one sharp (F#). The music continues from the previous system, featuring various note values and rests. Measure 112 starts with a treble clef and a key signature of one sharp. The piece concludes with a double bar line at the end of measure 114.

114

Handwritten musical score for measures 115-117. The score is written on three staves. The top staff is in treble clef, the middle in alto clef, and the bottom in bass clef. The key signature has one sharp (F#). The music continues from the previous system, featuring various note values and rests. Measure 115 starts with a treble clef and a key signature of one sharp. The piece concludes with a double bar line at the end of measure 117.



117

Handwritten musical score for measures 117-119. The system consists of three staves. The top staff is in bass clef, the middle in treble clef, and the bottom in bass clef. Measure 117 starts with a forte (*f*) dynamic. Measure 118 has a crescendo hairpin. Measure 119 has a mezzo-forte (*mf*) dynamic. The music features various chords and melodic lines with slurs and ties.

120

Handwritten musical score for measures 120-122. The system consists of three staves. The top staff is in bass clef, the middle in treble clef, and the bottom in bass clef. Measure 120 starts with a forte (*f*) dynamic. Measure 121 has a crescendo hairpin. Measure 122 has a forte (*f*) dynamic. The music features various chords and melodic lines with slurs and ties.

123

Handwritten musical score for measures 123-125. The system consists of three staves. The top staff is in bass clef, the middle in treble clef, and the bottom in bass clef. Measure 123 starts with a forte (*f*) dynamic. Measure 124 has a forte (*f*) dynamic. Measure 125 has a forte (*f*) dynamic. The music features various chords and melodic lines with slurs and ties.



126

129

132

135

Handwritten musical score for measures 135-137. The score is written on three staves. The top staff is a single melodic line. The middle and bottom staves are a grand staff (treble and bass clef). Measure 135 starts with a treble clef, a key signature of one sharp (F#), and a common time signature. Measure 136 features a piano (ff) dynamic. Measure 137 features a mezzo-forte (mf) dynamic. The music includes various notes, rests, and accidentals.

138

Handwritten musical score for measures 138-140. The score is written on three staves. The top staff is a single melodic line. The middle and bottom staves are a grand staff (treble and bass clef). Measure 138 starts with a treble clef, a key signature of one sharp (F#), and a common time signature. Measure 139 features a mezzo-forte (mf) dynamic. Measure 140 features a mezzo-forte (mf) dynamic. The music includes various notes, rests, and accidentals.

141

Handwritten musical score for measures 141-143. The score is written on three staves. The top staff is a single melodic line. The middle and bottom staves are a grand staff (treble and bass clef). Measure 141 starts with a treble clef, a key signature of one sharp (F#), and a common time signature. Measure 142 features a mezzo-forte (mf) dynamic. Measure 143 features a mezzo-forte (mf) dynamic. The music includes various notes, rests, and accidentals.

17

144

Handwritten musical score for measures 144-146. The system consists of three staves. The top staff is a single melodic line in treble clef with a key signature of one sharp (F#) and a common time signature (C). The middle and bottom staves are a grand staff in treble and bass clefs, providing harmonic accompaniment. Dynamics include 'p' (piano) at the start and 'ff' (fortissimo) in the middle. Slurs and ties are used throughout the passage.

147

Handwritten musical score for measures 147-149. The system consists of three staves. The top staff continues the melodic line. The middle and bottom staves provide harmonic accompaniment. Dynamics include 'mf' (mezzo-forte) at the start and middle. Slurs and ties are used throughout the passage.

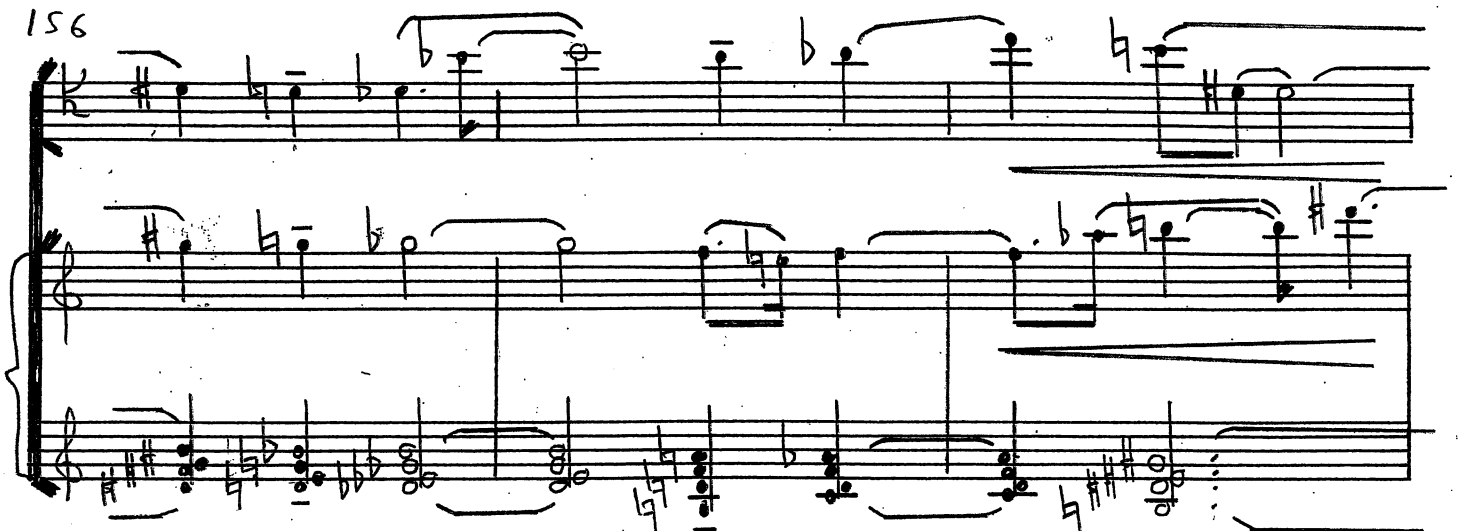
150

Handwritten musical score for measures 150-152. The system consists of three staves. The top staff continues the melodic line. The middle and bottom staves provide harmonic accompaniment. Slurs and ties are used throughout the passage.

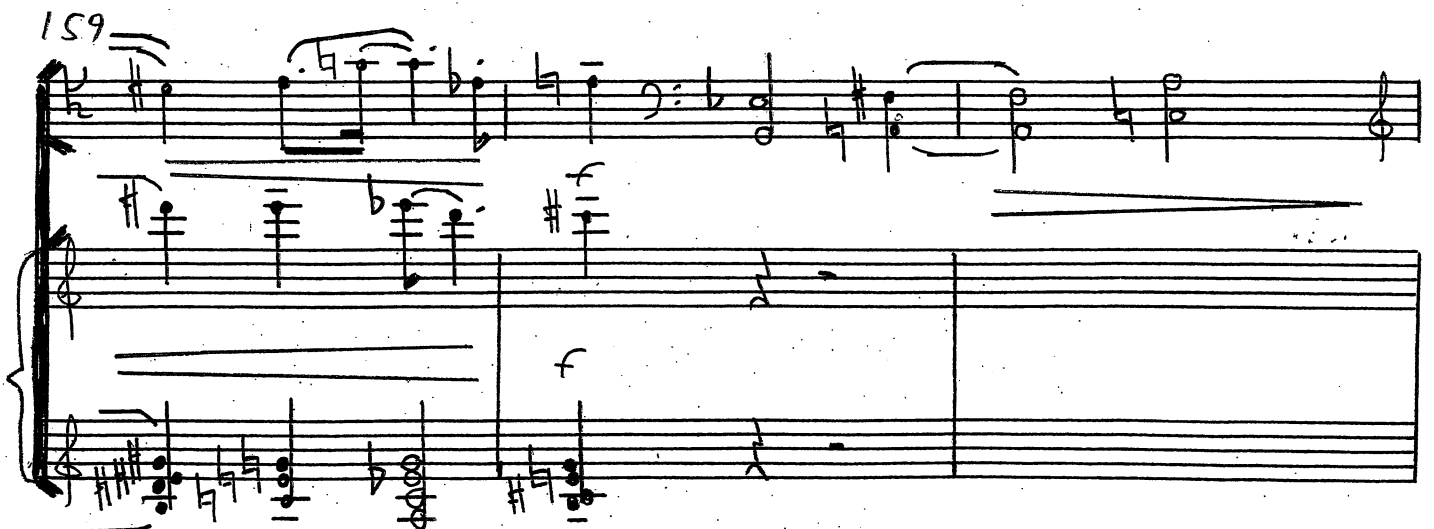
153



156



159



162

Handwritten musical score for measures 162-164. The score is written on three staves. The top staff is in treble clef, the middle in alto clef, and the bottom in bass clef. The key signature has one flat (B-flat). Measure 162 starts with a treble clef and a B-flat. The middle staff has a dynamic marking of *mf*. The bottom staff has a dynamic marking of *mf*. The music consists of eighth and sixteenth notes, with some rests and accidentals.

165

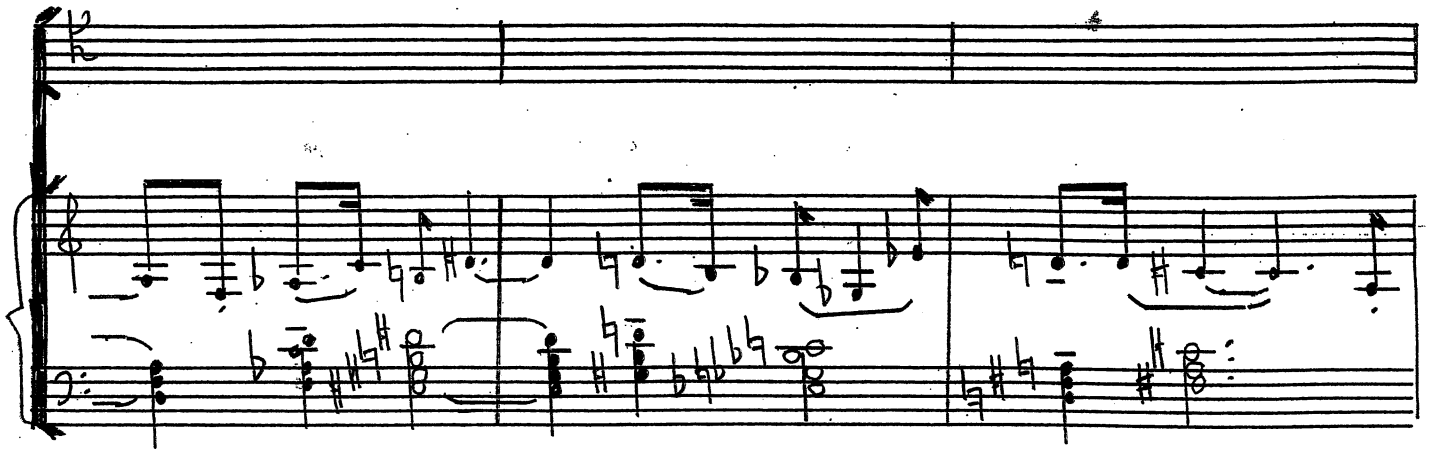
Handwritten musical score for measures 165-167. The score is written on three staves. The top staff is in treble clef, the middle in alto clef, and the bottom in bass clef. The key signature has one flat (B-flat). Measure 165 starts with a treble clef and a B-flat. The middle staff has a dynamic marking of *f*. The bottom staff has a dynamic marking of *f*. The music consists of eighth and sixteenth notes, with some rests and accidentals.

168

Handwritten musical score for measures 168-170. The score is written on three staves. The top staff is in treble clef, the middle in alto clef, and the bottom in bass clef. The key signature has one flat (B-flat). Measure 168 starts with a treble clef and a B-flat. The middle staff has a dynamic marking of *mf*. The bottom staff has a dynamic marking of *mf*. The music consists of eighth and sixteenth notes, with some rests and accidentals.



171



174



177





180

Handwritten musical score for measures 180-182. The score is written on three staves. The top staff is a single line. The middle and bottom staves are grouped by a brace on the left. The key signature has one sharp (F#). The music features various chords and melodic lines. A 'ff' (fortissimo) dynamic marking is present in measure 182.

183

Handwritten musical score for measures 183-185. The score is written on three staves. The top staff is a single line. The middle and bottom staves are grouped by a brace on the left. The key signature has one sharp (F#). The music features various chords and melodic lines.

186

Handwritten musical score for measures 186-188. The score is written on three staves. The top staff is a single line. The middle and bottom staves are grouped by a brace on the left. The key signature has one sharp (F#). The music features various chords and melodic lines. A 'mf' (mezzo-forte) dynamic marking is present in measure 187.

189

Handwritten musical score for measures 189-191. The system consists of three staves. The top staff is a single melodic line in treble clef with a key signature of one flat (B-flat). It begins with a forte (*f*) dynamic. The middle and bottom staves are grand staves (treble and bass clefs) with a piano accompaniment that starts with a forte (*f*) dynamic. The piano part features chords and some movement in the first measure, then rests for the next two measures.

192

Handwritten musical score for measures 192-194. The system consists of three staves. The top staff continues the melodic line in treble clef. The middle and bottom staves are grand staves with a piano accompaniment that remains mostly static, with some movement in the final measure of the system.

195

Handwritten musical score for measures 195-197. The system consists of three staves. The top staff continues the melodic line in treble clef. The middle and bottom staves are grand staves with a piano accompaniment. In measure 195, the piano part has some movement. In measure 196, the piano part features a melodic line in the right hand and a bass line in the left hand, both marked with a mezzo-forte (*mf*) dynamic. The system concludes in measure 197.

198

Handwritten musical score for measures 198-200. The score is written on three staves. The top staff is a single line. The middle and bottom staves are grouped by a brace on the left. The key signature has one sharp (F#). The time signature is 4/4. The music features various note values, including eighth and sixteenth notes, and rests. A dynamic marking of *ff* (fortissimo) is present in measure 200.

201

Handwritten musical score for measures 201-203. The score is written on three staves. The top staff is a single line. The middle and bottom staves are grouped by a brace on the left. The key signature has one sharp (F#). The time signature is 4/4. The music features various note values, including eighth and sixteenth notes, and rests.

204

Handwritten musical score for measures 204-206. The score is written on three staves. The top staff is a single line. The middle and bottom staves are grouped by a brace on the left. The key signature has one sharp (F#). The time signature is 4/4. The music features various note values, including eighth and sixteenth notes, and rests. Dynamic markings of *mf* (mezzo-forte) are present in measures 205 and 206.

24

207

Handwritten musical score for measures 207-210. The score is written on three staves. The top staff is a single melodic line. The bottom two staves are a grand staff (treble and bass clef). The music is in a key with one flat (B-flat) and a 4/4 time signature. Measure 207 starts with a treble clef and a B-flat. Measure 208 has a treble clef and a B-flat. Measure 209 has a treble clef and a B-flat. Measure 210 has a treble clef and a B-flat.

210

Handwritten musical score for measures 211-214. The score is written on three staves. The top staff is a single melodic line. The bottom two staves are a grand staff (treble and bass clef). The music is in a key with one flat (B-flat) and a 4/4 time signature. Measure 211 starts with a treble clef and a B-flat. Measure 212 has a treble clef and a B-flat. Measure 213 has a treble clef and a B-flat. Measure 214 has a treble clef and a B-flat.

213

Handwritten musical score for measures 215-218. The score is written on three staves. The top staff is a single melodic line. The bottom two staves are a grand staff (treble and bass clef). The music is in a key with one flat (B-flat) and a 4/4 time signature. Measure 215 starts with a treble clef and a B-flat. Measure 216 has a treble clef and a B-flat. Measure 217 has a treble clef and a B-flat. Measure 218 has a treble clef and a B-flat.

216

Handwritten musical score for measures 216-218. The score is written on three systems of staves. The first system (measures 216-217) features a treble clef staff with a melodic line and a grand staff (treble and bass clefs) with a piano accompaniment. The second system (measure 218) continues the accompaniment. Dynamics include *ff* (fortissimo) in measure 217 and *ff* in measure 218. The key signature has one flat (B-flat).

219

Handwritten musical score for measures 219-221. The score is written on three systems of staves. The first system (measures 219-220) features a treble clef staff with a melodic line and a grand staff with a piano accompaniment. The second system (measure 221) continues the accompaniment. Dynamics include *mf* (mezzo-forte) in measures 219, 220, and 221. The key signature has one flat (B-flat).

222

Handwritten musical score for measures 222-224. The score is written on three systems of staves. The first system (measures 222-223) features a treble clef staff with a melodic line and a grand staff with a piano accompaniment. The second system (measure 224) continues the accompaniment. Dynamics include *f* (forte) in measures 222, 223, and 224. The key signature has one flat (B-flat).

26

225

228

231



234

Handwritten musical score for measures 234-236. The score is written on three staves. The top staff is a single line. The middle and bottom staves are grouped by a brace and contain complex chordal and melodic notation with various accidentals (sharps, flats, naturals) and ties. The notation is dense and appears to be a sketch or a working draft.

237

Handwritten musical score for measures 237-239. The score is written on three staves. The top staff is a single line. The middle and bottom staves are grouped by a brace and contain complex chordal and melodic notation with various accidentals (sharps, flats, naturals) and ties. The notation is dense and appears to be a sketch or a working draft.

240

Handwritten musical score for measures 240-242. The score is written on three staves. The top staff is a single line. The middle and bottom staves are grouped by a brace and contain complex chordal and melodic notation with various accidentals (sharps, flats, naturals) and ties. The notation is dense and appears to be a sketch or a working draft. The word "ff" (fortissimo) is written above the middle staff in measure 241.

28

243

Handwritten musical score for measures 243-245. The score is written on three staves. The top staff is a single melodic line. The bottom two staves are a grand staff (treble and bass clef). The key signature has one sharp (F#). The time signature is 4/4. The music features various note values, including eighth and sixteenth notes, and rests. There are dynamic markings 'f' (forte) at the beginning of the first and third staves. The notation includes slurs, ties, and accidentals.

246

Handwritten musical score for measures 246-248. The score is written on three staves. The top staff is a single melodic line. The bottom two staves are a grand staff (treble and bass clef). The key signature has one sharp (F#). The time signature is 4/4. The music features various note values, including eighth and sixteenth notes, and rests. There are dynamic markings 'mf' (mezzo-forte) at the beginning of the first and third staves. The notation includes slurs, ties, and accidentals.

249

Handwritten musical score for measures 249-251. The score is written on three staves. The top staff is a single melodic line. The bottom two staves are a grand staff (treble and bass clef). The key signature has one sharp (F#). The time signature is 4/4. The music features various note values, including eighth and sixteenth notes, and rests. The notation includes slurs, ties, and accidentals.

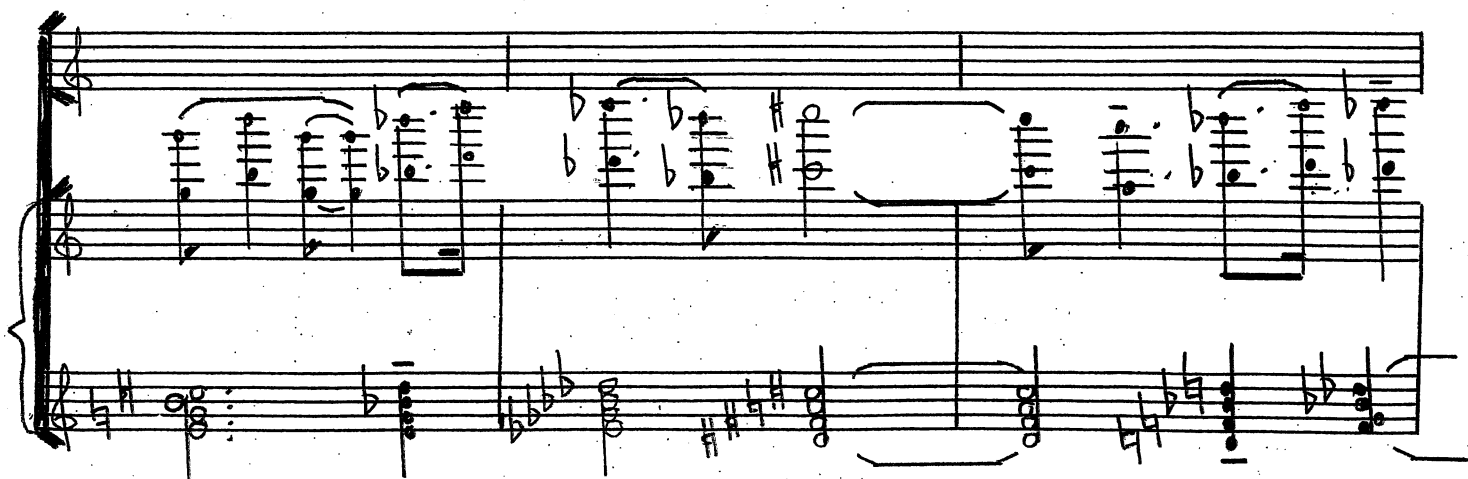
252



255



258



261

Handwritten musical score for measures 261-263. The system consists of a grand staff with a treble and bass clef. The music is written in a key with one flat (B-flat) and a common time signature. The notation includes various note values, rests, and dynamic markings. The first measure (261) starts with a forte (f) dynamic. The second measure (262) continues the melodic line. The third measure (263) ends with a repeat sign. The bass line provides harmonic support with chords and single notes.

264

Handwritten musical score for measures 264-266. The system consists of a grand staff with a treble and bass clef. The music is written in a key with one flat (B-flat) and a common time signature. The notation includes various note values, rests, and dynamic markings. The first measure (264) starts with a forte (f) dynamic. The second measure (265) continues the melodic line. The third measure (266) ends with a repeat sign. The bass line provides harmonic support with chords and single notes.

267

Handwritten musical score for measures 267-269. The system consists of a grand staff with a treble and bass clef. The music is written in a key with one flat (B-flat) and a common time signature. The notation includes various note values, rests, and dynamic markings. The first measure (267) starts with a forte (f) dynamic. The second measure (268) continues the melodic line. The third measure (269) ends with a repeat sign. The bass line provides harmonic support with chords and single notes.

270

Handwritten musical score for measures 270-272. The score is written on three staves. The top staff is a single melodic line. The bottom two staves are a grand staff (treble and bass clef). The music features various chords, including triads and dyads, with some accidentals (sharps and flats). There are also some slurs and ties. The notation is somewhat sketchy, with some notes and accidentals appearing to be added or corrected.

273

Handwritten musical score for measures 273-275. The score is written on three staves. The top staff is a single melodic line. The bottom two staves are a grand staff (treble and bass clef). The music features various chords, including triads and dyads, with some accidentals (sharps and flats). There are also some slurs and ties. The notation is somewhat sketchy, with some notes and accidentals appearing to be added or corrected. A dynamic marking 'f' is visible in measure 274.

276

Handwritten musical score for measures 276-278. The score is written on three staves. The top staff is a single melodic line. The bottom two staves are a grand staff (treble and bass clef). The music features various chords, including triads and dyads, with some accidentals (sharps and flats). There are also some slurs and ties. The notation is somewhat sketchy, with some notes and accidentals appearing to be added or corrected. A dynamic marking 'f' is visible in measure 277.



279

282

285



33

288

291

294

34

297

Handwritten musical score for measures 297-300. Measure 297 starts with a treble clef and a key signature of one sharp (F#). The melody consists of quarter and eighth notes with various accidentals. The piano accompaniment is in the left hand, featuring chords and single notes. Measures 298-300 continue the piece with similar notation.

300

Handwritten musical score for measures 300-303. Measure 300 continues the melody and accompaniment from the previous system. Measures 301-303 show further development of the musical themes with various note values and accidentals.

303

Handwritten musical score for measures 303-306. Measure 303 starts with a treble clef and a key signature of one sharp (F#). The melody and piano accompaniment continue. Measures 304-306 complete the system with various musical notations.

35

306

Handwritten musical score for measures 306-308. The score is written on three staves. The top staff is a single melodic line. The middle and bottom staves are a grand staff (treble and bass clef). The key signature has one flat (B-flat). Measure 306 starts with a treble clef and a key signature change to one flat. Measure 307 has a key signature change to two flats (B-flat and E-flat). Measure 308 has a key signature change to three flats (B-flat, E-flat, and A-flat).

309

Handwritten musical score for measures 309-311. The score is written on three staves. The top staff is a single melodic line. The middle and bottom staves are a grand staff (treble and bass clef). The key signature has three flats (B-flat, E-flat, and A-flat). Measure 309 starts with a treble clef and a key signature change to three flats. Measure 310 has a key signature change to two flats (B-flat and E-flat). Measure 311 has a key signature change to one flat (B-flat).

312

Handwritten musical score for measures 312-314. The score is written on three staves. The top staff is a single melodic line. The middle and bottom staves are a grand staff (treble and bass clef). The key signature has one flat (B-flat). Measure 312 starts with a treble clef and a key signature change to one flat. Measure 313 has a key signature change to two flats (B-flat and E-flat). Measure 314 has a key signature change to three flats (B-flat, E-flat, and A-flat).

315

Handwritten musical score for measures 315-317. The score is written on three staves. The top staff is a single line. The middle and bottom staves are a grand staff (treble and bass clefs). The music features complex harmonic structures with many accidentals (sharps, flats, naturals) and ties. The notation is dense and appears to be a sketch or a working draft.

318

Handwritten musical score for measures 318-320. The score is written on three staves. The top staff is a single line. The middle and bottom staves are a grand staff (treble and bass clefs). The music continues with complex harmonic structures and many accidentals. The notation is dense and appears to be a sketch or a working draft.

321

Handwritten musical score for measures 321-323. The score is written on three staves. The top staff is a single line. The middle and bottom staves are a grand staff (treble and bass clefs). The music continues with complex harmonic structures and many accidentals. The notation is dense and appears to be a sketch or a working draft. The word "rit." is written above the first measure of the top staff.

324 (rit.) 37

327  $\text{♩} = 76$

330



38

333

Handwritten musical score for measures 333-335. The score is written on three systems of staves. The first system (measures 333-334) features a treble clef staff with a melody and a grand staff (treble and bass clefs) with a piano accompaniment. The second system (measure 335) continues the accompaniment. Dynamic markings include *mf* above the treble staff in measure 334 and *mf* above the bass staff in measure 335. The key signature has one sharp (F#) and the time signature is 4/4.

336

Handwritten musical score for measures 336-338. The score is written on three systems of staves. The first system (measures 336-337) features a treble clef staff with a melody and a grand staff with a piano accompaniment. The second system (measure 338) continues the accompaniment. The key signature has one sharp (F#) and the time signature is 4/4.

339

Handwritten musical score for measures 339-341. The score is written on three systems of staves. The first system (measures 339-340) features a treble clef staff with a melody and a grand staff with a piano accompaniment. The second system (measure 341) continues the accompaniment. Dynamic markings include *f* above the treble staff in measure 340 and *f* above the bass staff in measure 341. The key signature has one sharp (F#) and the time signature is 4/4.

342

Handwritten musical score for measures 342-344. The system consists of three staves. The top staff is a single melodic line in treble clef with a key signature of one flat (B-flat). The middle and bottom staves are a grand staff (treble and bass clefs) with a key signature of one flat. The music features various note values, including eighth and sixteenth notes, and rests, with some notes beamed together.

345

Handwritten musical score for measures 345-347. The system consists of three staves. The top staff is a single melodic line in treble clef with a key signature of one flat. The middle and bottom staves are a grand staff (treble and bass clefs) with a key signature of one flat. The music continues with various note values and rests, including some beamed sixteenth notes.

348

Handwritten musical score for measures 348-350. The system consists of three staves. The top staff is a single melodic line in treble clef with a key signature of one flat. The middle and bottom staves are a grand staff (treble and bass clefs) with a key signature of one flat. The music features various note values and rests. The dynamic marking *mf* (mezzo-forte) is written below the first measure of the top staff and the first measure of the bottom staff.

40

351

Handwritten musical score for measures 351-353. The top staff is in treble clef with a key signature of one sharp (F#). It contains a melodic line with eighth and quarter notes, including a flat sign. The bottom staff is a grand staff (treble and bass clefs) with sustained chords. Dynamics include 'f' and 'rit.' with a decrescendo hairpin.

354 (rit) — — — ♩ = 54

Handwritten musical score for measures 354-356. Measure 354 has a 'rit.' marking and a tempo indication '♩ = 54'. The top staff has a melodic line starting with a half note. The bottom staff has sustained chords. Dynamics include 'p' and 'rit.' with a decrescendo hairpin.

357

Handwritten musical score for measures 357-359. The top staff is in treble clef with a key signature of one sharp (F#). It contains a melodic line with quarter and eighth notes. The bottom staff is a grand staff with sustained chords. A decrescendo hairpin is present.

41

360

Handwritten musical score for measures 360-362. The score is written on three staves. The top staff is in treble clef, the middle in alto clef, and the bottom in bass clef. The key signature has one sharp (F#). Measure 360 starts with a treble clef and a key signature change to one sharp. The music features various note values, including half notes and quarter notes, with some beamed sixteenth notes. Dynamics include *pp* (pianissimo) in measures 360 and 361. The piece concludes in measure 362 with a double bar line.

363

Handwritten musical score for measures 363-365. The score is written on three staves. The top staff is in treble clef, the middle in alto clef, and the bottom in bass clef. The key signature has one sharp (F#). Measure 363 starts with a treble clef and a key signature change to one sharp. The music features various note values, including half notes and quarter notes, with some beamed sixteenth notes. Dynamics include *pp* (pianissimo) in measures 363 and 364. The piece concludes in measure 365 with a double bar line.

366

Handwritten musical score for measures 366-368. The score is written on three staves. The top staff is in treble clef, the middle in alto clef, and the bottom in bass clef. The key signature has one sharp (F#). Measure 366 starts with a treble clef and a key signature change to one sharp. The music features various note values, including half notes and quarter notes, with some beamed sixteenth notes. Dynamics include *mf* (mezzo-forte) in measures 367 and 368. The piece concludes in measure 368 with a double bar line.

42

369

372

375



43

378

381

384

44

Handwritten musical notation for measures 387-392. The system includes a treble clef staff and a grand staff (treble and bass clefs). Measure 387 is marked with a key signature change to one sharp (F#) and a common time signature (C). The notation features various notes, rests, and dynamic markings such as *p* (piano) and *f* (forte). A handwritten '44' is visible above the staff.

Handwritten musical notation for measures 390-395. The system includes a treble clef staff and a grand staff. Measure 390 is marked with a key signature change to one sharp (F#) and a common time signature (C). The notation features various notes, rests, and dynamic markings such as *p* (piano) and *f* (forte).

Handwritten musical notation for measures 393-398. The system includes a treble clef staff and a grand staff. Measure 393 is marked with a key signature change to one sharp (F#) and a common time signature (C). The notation features various notes, rests, and dynamic markings such as *p* (piano) and *f* (forte).

45

396

Handwritten musical score for measures 396-398. The system consists of three staves. The top staff is in treble clef with a key signature of one flat (B-flat). The middle and bottom staves are in bass clef. The music features various chords and melodic lines with slurs and ties. Measure 396 starts with a treble staff chord and a bass staff chord. Measure 397 continues the melodic development. Measure 398 concludes the system with a final chord in the treble staff.

399

Handwritten musical score for measures 399-401. The system consists of three staves. The top staff is in treble clef with a key signature of one flat. The middle and bottom staves are in bass clef. Measure 399 begins with a treble staff chord and a bass staff chord. Measure 400 shows a continuation of the melodic lines. Measure 401 ends with a final chord in the treble staff.

402

Handwritten musical score for measures 402-404. The system consists of three staves. The top staff is in treble clef with a key signature of one flat. The middle and bottom staves are in bass clef. Measure 402 starts with a treble staff chord and a bass staff chord. Measure 403 continues the melodic lines. Measure 404 ends with a final chord in the treble staff. The dynamic marking *pp* (pianissimo) is written above the first staff and below the second staff in measure 402.

46

405

mf

408

mf

411

mf

47

414

Handwritten musical score for measures 414-416. The score is written on three staves. The top staff is in treble clef with a key signature of one flat (B-flat) and a time signature of 2/2. It contains a melodic line with a slur over measures 415 and 416. The middle staff is in treble clef with a key signature of one flat and a time signature of 2/2. It contains a melodic line with a slur over measures 415 and 416. The bottom staff is in bass clef with a key signature of one flat and a time signature of 2/2. It contains a bass line with a slur over measures 415 and 416. There are dynamic markings 'p' (piano) in measures 415 and 416. There are also some handwritten notes and symbols, including a 'p' and some symbols that look like 'A' or 'X'.

417

Handwritten musical score for measures 417-419. The score is written on three staves. The top staff is in treble clef with a key signature of one flat and a time signature of 2/2. It contains a melodic line with a slur over measures 418 and 419. The middle staff is in treble clef with a key signature of one flat and a time signature of 2/2. It contains a melodic line with a slur over measures 418 and 419. The bottom staff is in bass clef with a key signature of one flat and a time signature of 2/2. It contains a bass line with a slur over measures 418 and 419.

420

Handwritten musical score for measures 420-422. The score is written on three staves. The top staff is in treble clef with a key signature of one flat and a time signature of 2/2. It contains a melodic line with a slur over measures 421 and 422. The middle staff is in treble clef with a key signature of one flat and a time signature of 2/2. It contains a melodic line with a slur over measures 421 and 422. The bottom staff is in bass clef with a key signature of one flat and a time signature of 2/2. It contains a bass line with a slur over measures 421 and 422.



48

423

Handwritten musical score for measures 423-425. The score is written on three staves. The top staff is in treble clef, the middle in alto clef, and the bottom in bass clef. The key signature has one sharp (F#). Measure 423 starts with a treble clef and a key signature change to one sharp. The music consists of quarter and eighth notes with various accidentals. Measure 424 continues the melodic line. Measure 425 features a more complex bass line with many accidentals and a final chord.

426

rit.

$\text{♩} = 46$

Handwritten musical score for measures 426-428. The score is written on three staves. Measure 426 begins with a 'rit.' (ritardando) marking and a tempo indication of  $\text{♩} = 46$ . The music continues with quarter and eighth notes. Measure 427 shows a melodic line in the upper staves and a complex bass line. Measure 428 features a 'mf' (mezzo-forte) dynamic marking and a final chord in the bass.

429

Handwritten musical score for measures 429-431. The score is written on three staves. Measure 429 starts with a treble clef and a key signature change to one sharp. The music consists of quarter and eighth notes. Measure 430 continues the melodic line. Measure 431 features a final chord in the bass.

49

432

435

438

50

441

444

447

Durata: 22'

10/9 - 17/10 2017  
Copy for perusal. This music is copyright protected