

Suite

Håkan Theorin
(2017)

$\text{♩} = 60$

Clarinete in Bb

Piano forte

p

p

Handwritten musical score for the second system. The system consists of three staves. The top staff is for Clarinet in Bb, the middle for Piano, and the bottom for Forte. The music is in 4/4 time. The first measure is marked with a '3' and a bracket, indicating a triplet. The notation includes various notes, rests, and accidentals (sharps, flats, naturals).

Handwritten musical score for the third system. The system consists of three staves. The top staff is for Clarinet in Bb, the middle for Piano, and the bottom for Forte. The music is in 4/4 time. The first measure is marked with a '6' and a bracket, indicating a sextuplet. The notation includes various notes, rests, and accidentals (sharps, flats, naturals).

Handwritten musical score, measures 9 to 11. The notation is in treble and bass clefs, featuring various notes, rests, and accidentals. A handwritten '9' is above the first measure, and a handwritten '2' is above the second measure. The bass clef part includes a 'f' dynamic marking.

Handwritten musical score, measures 12 to 14. The notation continues in treble and bass clefs. A handwritten '12' is above the first measure. The bass clef part includes a 'p' dynamic marking. The notation is complex, with many accidentals and ties.

Handwritten musical score, measures 15 to 17. The notation continues in treble and bass clefs. A handwritten '15' is above the first measure. The bass clef part includes a 'b' dynamic marking. The notation is complex, with many accidentals and ties.

Copy for perusal. This music is copyright protected.

3

18

Handwritten musical score for measures 18-20. The system consists of three staves. The top staff is a single line. The middle and bottom staves are connected by a brace on the left. The music is written in a key with one sharp (F#) and one flat (Bb). Measure 18 contains a complex chordal structure with many accidentals. Measure 19 continues this structure. Measure 20 shows a transition with a double bar line and a key signature change to two flats (Bb and Eb).

21

Handwritten musical score for measures 21-23. The system consists of three staves. The top staff is a single line. The middle and bottom staves are connected by a brace on the left. The music is written in a key with two flats (Bb and Eb). Measure 21 contains a complex chordal structure. Measure 22 continues this structure. Measure 23 shows a transition with a double bar line and a key signature change to one flat (Bb). The dynamic marking *mf* is written above the middle staff in measure 22.

24

Handwritten musical score for measures 24-26. The system consists of three staves. The top staff is a single line. The middle and bottom staves are connected by a brace on the left. The music is written in a key with one flat (Bb). Measure 24 contains a complex chordal structure. Measure 25 continues this structure. Measure 26 shows a transition with a double bar line and a key signature change to one sharp (F#).

4

27

Handwritten musical score for measures 27-29. The score is written on three staves. The top staff is a single melodic line in treble clef. The bottom two staves are a grand staff (treble and bass clefs) for piano accompaniment. Measure 27 starts with a piano (*p*) dynamic. The key signature has one sharp (F#). The music features various chords and melodic fragments.

30

Handwritten musical score for measures 30-32. The score is written on three staves. The top staff is a single melodic line in treble clef. The bottom two staves are a grand staff (treble and bass clefs) for piano accompaniment. Measure 30 starts with a mezzo-forte (*mf*) dynamic. The key signature has one sharp (F#). The music features various chords and melodic fragments.

33

acc.

Handwritten musical score for measures 33-35. The score is written on three staves. The top staff is a single melodic line in treble clef. The bottom two staves are a grand staff (treble and bass clefs) for piano accompaniment. Measure 33 starts with an accent (*acc.*) dynamic. The key signature has one sharp (F#). The music features various chords and melodic fragments.

36 (acc.) 5 $\text{♩} = 92$

39

42

6

45

ff

f

48

mf

mf

51

mf

mf

p

7

54

57

60

8

63

66

69

72

Handwritten musical score for measures 72-74. The system consists of three staves. The top staff is a single treble clef. The middle and bottom staves are grand staves (treble and bass clefs). The music is in 4/4 time. Measure 72 features a treble staff with a whole note chord (F4, A4, C5) and a grand staff with a whole note chord (F3, A3, C4). Measure 73 features a treble staff with a whole note chord (F4, A4, C5) and a grand staff with a whole note chord (F3, A3, C4). Measure 74 features a treble staff with a whole note chord (F4, A4, C5) and a grand staff with a whole note chord (F3, A3, C4).

75

Handwritten musical score for measures 75-77. The system consists of three staves. The top staff is a single treble clef. The middle and bottom staves are grand staves (treble and bass clefs). The music is in 4/4 time. Measure 75 features a treble staff with a whole note chord (F4, A4, C5) and a grand staff with a whole note chord (F3, A3, C4). Measure 76 features a treble staff with a whole note chord (F4, A4, C5) and a grand staff with a whole note chord (F3, A3, C4). Measure 77 features a treble staff with a whole note chord (F4, A4, C5) and a grand staff with a whole note chord (F3, A3, C4).

78

Handwritten musical score for measures 78-80. The system consists of three staves. The top staff is a single treble clef. The middle and bottom staves are grand staves (treble and bass clefs). The music is in 4/4 time. Measure 78 features a treble staff with a whole note chord (F4, A4, C5) and a grand staff with a whole note chord (F3, A3, C4). Measure 79 features a treble staff with a whole note chord (F4, A4, C5) and a grand staff with a whole note chord (F3, A3, C4). Measure 80 features a treble staff with a whole note chord (F4, A4, C5) and a grand staff with a whole note chord (F3, A3, C4).

81

ff

84

f

87

ff

//

90

Handwritten musical score for measures 90-92. Measure 90 has a treble clef with a whole note chord (F#4, C#5) and a bass clef with a whole note chord (Bb2, Fb3). Measure 91 has a treble clef with a half note chord (F#4, C#5) and a bass clef with a half note chord (Bb2, Fb3). Measure 92 has a treble clef with a half note chord (F#4, C#5) and a bass clef with a half note chord (Bb2, Fb3). The score includes various musical notations such as notes, rests, and dynamic markings.

93

Handwritten musical score for measures 93-95. Measure 93 has a treble clef with a whole note chord (F#4, C#5) and a bass clef with a whole note chord (Bb2, Fb3). Measure 94 has a treble clef with a half note chord (F#4, C#5) and a bass clef with a half note chord (Bb2, Fb3). Measure 95 has a treble clef with a half note chord (F#4, C#5) and a bass clef with a half note chord (Bb2, Fb3). The score includes various musical notations such as notes, rests, and dynamic markings.

96

Handwritten musical score for measures 96-98. Measure 96 has a treble clef with a whole note chord (F#4, C#5) and a bass clef with a whole note chord (Bb2, Fb3). Measure 97 has a treble clef with a half note chord (F#4, C#5) and a bass clef with a half note chord (Bb2, Fb3). Measure 98 has a treble clef with a half note chord (F#4, C#5) and a bass clef with a half note chord (Bb2, Fb3). The score includes various musical notations such as notes, rests, and dynamic markings.

12

99

102

105

13

108

Handwritten musical score for measures 108-110. The system consists of a single treble clef staff and a grand staff (treble and bass clefs). Measure 108 features a treble staff with a half note G4, a quarter note F#4, and a half note E4, with a slur over the last two notes. The bass staff has a whole note chord of G3 and B2. Measure 109 has a treble staff with a half note D5, a quarter note C#5, and a half note B4, with a slur over the last two notes. The bass staff has a whole note chord of D3 and F#2. Measure 110 has a treble staff with a half note A4, a quarter note G#4, and a half note F#4, with a slur over the last two notes. The bass staff has a whole note chord of A2 and C#2. The dynamic marking *mf* is present in both staves.

111

Handwritten musical score for measures 111-113. The system consists of a single treble clef staff and a grand staff. Measure 111 has a treble staff with a half note G4, a quarter note F#4, and a half note E4, with a slur over the last two notes. The bass staff has a whole note chord of G3 and B2. Measure 112 has a treble staff with a half note D5, a quarter note C#5, and a half note B4, with a slur over the last two notes. The bass staff has a whole note chord of D3 and F#2. Measure 113 has a treble staff with a half note A4, a quarter note G#4, and a half note F#4, with a slur over the last two notes. The bass staff has a whole note chord of A2 and C#2.

114

Handwritten musical score for measures 114-116. The system consists of a single treble clef staff and a grand staff. Measure 114 has a treble staff with a half note G4, a quarter note F#4, and a half note E4, with a slur over the last two notes. The bass staff has a whole note chord of G3 and B2. Measure 115 has a treble staff with a half note D5, a quarter note C#5, and a half note B4, with a slur over the last two notes. The bass staff has a whole note chord of D3 and F#2. Measure 116 has a treble staff with a half note A4, a quarter note G#4, and a half note F#4, with a slur over the last two notes. The bass staff has a whole note chord of A2 and C#2.

14

117

Handwritten musical score for measures 117-119. Measure 117 features a treble staff with a melodic line and a piano accompaniment of chords in the left hand. Measure 118 continues the piano accompaniment with a crescendo hairpin. Measure 119 shows a change in the piano accompaniment with a decrescendo hairpin. Dynamics include *ff* and *mf*.

120

Handwritten musical score for measures 120-122. Measure 120 has a treble staff with a melodic line and a piano accompaniment of chords. Measure 121 continues the piano accompaniment. Measure 122 shows a change in the piano accompaniment. Dynamics include *ff* and *mf*.

123

Handwritten musical score for measures 123-125. Measure 123 features a treble staff with a melodic line and a piano accompaniment of chords. Measure 124 continues the piano accompaniment. Measure 125 shows a change in the piano accompaniment. Dynamics include *ff* and *mf*.

15

Handwritten musical score for measures 126 to 131. The notation includes a treble clef, a key signature of one sharp (F#), and a common time signature (C). The music features a melody in the upper voice and a complex accompaniment in the lower voice, with various chords and intervals. A bracket above the first measure indicates a measure rest for 15 measures.

Handwritten musical score for measures 129 to 134. The notation includes a treble clef, a key signature of one sharp (F#), and a common time signature (C). The music features a melody in the upper voice and a complex accompaniment in the lower voice, with various chords and intervals.

Handwritten musical score for measures 132 to 137. The notation includes a treble clef, a key signature of one sharp (F#), and a common time signature (C). The music features a melody in the upper voice and a complex accompaniment in the lower voice, with various chords and intervals.

Copy for perusal. This music is copyright protected.

135

138

141

144

Handwritten musical score for measures 144-146. The score is written on three staves (treble, middle, and bass clefs). Measure 144 starts with a treble clef and a key signature of one flat (B-flat). The melody in the treble staff begins with a half note B-flat, followed by a quarter note A, and a half note G. The middle staff has a whole note chord of F major (F, A, C). The bass staff has a whole note chord of B-flat major (B-flat, D, F). Measure 145 continues the melody in the treble staff with a half note F, a quarter note E, and a half note D. The middle staff has a whole note chord of B-flat major (B-flat, D, F). The bass staff has a whole note chord of B-flat major (B-flat, D, F). Measure 146 continues the melody in the treble staff with a half note C, a quarter note B-flat, and a half note A. The middle staff has a whole note chord of B-flat major (B-flat, D, F). The bass staff has a whole note chord of B-flat major (B-flat, D, F). The dynamic marking *mf* is present in measures 144 and 145.

147

Handwritten musical score for measures 147-149. The score is written on three staves (treble, middle, and bass clefs). Measure 147 starts with a treble clef and a key signature of one flat (B-flat). The melody in the treble staff begins with a half note B-flat, followed by a quarter note A, and a half note G. The middle staff has a whole note chord of F major (F, A, C). The bass staff has a whole note chord of B-flat major (B-flat, D, F). Measure 148 continues the melody in the treble staff with a half note F, a quarter note E, and a half note D. The middle staff has a whole note chord of B-flat major (B-flat, D, F). The bass staff has a whole note chord of B-flat major (B-flat, D, F). Measure 149 continues the melody in the treble staff with a half note C, a quarter note B-flat, and a half note A. The middle staff has a whole note chord of B-flat major (B-flat, D, F). The bass staff has a whole note chord of B-flat major (B-flat, D, F). The dynamic marking *f* is present in measures 147 and 148.

150

Handwritten musical score for measures 150-152. The score is written on three staves (treble, middle, and bass clefs). Measure 150 starts with a treble clef and a key signature of one flat (B-flat). The melody in the treble staff begins with a half note B-flat, followed by a quarter note A, and a half note G. The middle staff has a whole note chord of F major (F, A, C). The bass staff has a whole note chord of B-flat major (B-flat, D, F). Measure 151 continues the melody in the treble staff with a half note F, a quarter note E, and a half note D. The middle staff has a whole note chord of B-flat major (B-flat, D, F). The bass staff has a whole note chord of B-flat major (B-flat, D, F). Measure 152 continues the melody in the treble staff with a half note C, a quarter note B-flat, and a half note A. The middle staff has a whole note chord of B-flat major (B-flat, D, F). The bass staff has a whole note chord of B-flat major (B-flat, D, F).

153

Handwritten musical score for measures 153-155. The score is written on three staves. The top staff is a single melodic line. The middle and bottom staves are a grand staff (treble and bass clef). The music is in a key with one flat (B-flat major or D minor) and 3/4 time. Measure 153: Treble clef has a half note B4, quarter note A4, quarter note G4. Bass clef has a half note F3, quarter note E3, quarter note D3. Grand staff has a half note chord of F3, A3, C4, quarter note chord of B2, D3, F3. Measure 154: Treble clef has a half note A4, quarter note G4, quarter note F#4. Bass clef has a half note G3, quarter note F3, quarter note E3. Grand staff has a half note chord of G3, B3, D4, quarter note chord of C4, E4, G4. Measure 155: Treble clef has a half note G4, quarter note F#4, quarter note E4. Bass clef has a half note F3, quarter note E3, quarter note D3. Grand staff has a half note chord of F3, A3, C4, quarter note chord of B2, D3, F3.

156

Handwritten musical score for measures 156-158. The score is written on three staves. The top staff is a single melodic line. The middle and bottom staves are a grand staff (treble and bass clef). The music is in a key with one flat (B-flat major or D minor) and 3/4 time. Measure 156: Treble clef has a half note A4, quarter note G4, quarter note F#4. Bass clef has a half note G3, quarter note F3, quarter note E3. Grand staff has a half note chord of G3, B3, D4, quarter note chord of C4, E4, G4. Measure 157: Treble clef has a half note G4, quarter note F#4, quarter note E4. Bass clef has a half note F3, quarter note E3, quarter note D3. Grand staff has a half note chord of F3, A3, C4, quarter note chord of B2, D3, F3. Measure 158: Treble clef has a half note F#4, quarter note E4, quarter note D4. Bass clef has a half note E3, quarter note D3, quarter note C3. Grand staff has a half note chord of E3, G3, B3, quarter note chord of F3, A3, C4.

159

Handwritten musical score for measures 159-161. The score is written on three staves. The top staff is a single melodic line. The middle and bottom staves are a grand staff (treble and bass clef). The music is in a key with one flat (B-flat major or D minor) and 3/4 time. Measure 159: Treble clef has a half note A4, quarter note G4, quarter note F#4. Bass clef has a half note G3, quarter note F3, quarter note E3. Grand staff has a half note chord of G3, B3, D4, quarter note chord of C4, E4, G4. Measure 160: Treble clef has a half note G4, quarter note F#4, quarter note E4. Bass clef has a half note F3, quarter note E3, quarter note D3. Grand staff has a half note chord of F3, A3, C4, quarter note chord of B2, D3, F3. Measure 161: Treble clef has a half note F#4, quarter note E4, quarter note D4. Bass clef has a half note E3, quarter note D3, quarter note C3. Grand staff has a half note chord of E3, G3, B3, quarter note chord of F3, A3, C4.

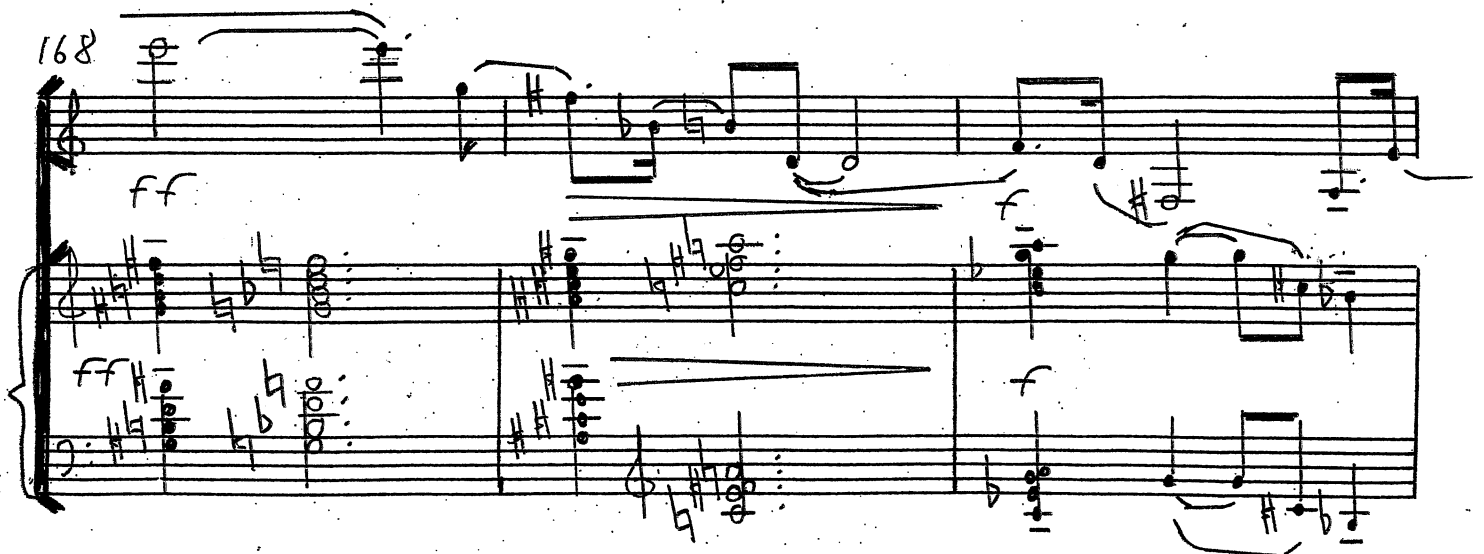
162



165



168



171



174



177



180

mf

mf

183

186

ff

ff

[illegible]

192

Handwritten musical score for three staves, numbered 192. The notation includes various notes, rests, and accidentals (sharps, flats, naturals). The score is written in a single system across three staves.

19.5

Handwritten musical score for three staves, labeled 195. The notation includes various musical symbols such as notes, rests, and accidentals, with some parts enclosed in brackets.

23

198

201

ff

m.s.

204

mf

mf

Copy for perusal. This music is copyright protected.

207

Handwritten musical score for measures 207-210. Measure 207: Treble clef has a melodic line with eighth and quarter notes, including a sharp sign. Bass clef has a bass line with eighth and quarter notes. Measure 208: Treble clef has a melodic line with eighth and quarter notes. Bass clef has a bass line with eighth and quarter notes. Measure 209: Treble clef has a melodic line with eighth and quarter notes. Bass clef has a bass line with eighth and quarter notes. Measure 210: Treble clef has a melodic line with eighth and quarter notes. Bass clef has a bass line with eighth and quarter notes. The system ends with a double bar line.

210

Handwritten musical score for measures 210-213. Measure 210: Treble clef has a melodic line with eighth and quarter notes. Bass clef has a bass line with eighth and quarter notes. Measure 211: Treble clef has a melodic line with eighth and quarter notes. Bass clef has a bass line with eighth and quarter notes. Measure 212: Treble clef has a melodic line with eighth and quarter notes. Bass clef has a bass line with eighth and quarter notes. Measure 213: Treble clef has a melodic line with eighth and quarter notes. Bass clef has a bass line with eighth and quarter notes. The system ends with a double bar line.

213

Handwritten musical score for measures 213-216. Measure 213: Treble clef has a melodic line with eighth and quarter notes. Bass clef has a bass line with eighth and quarter notes. Measure 214: Treble clef has a melodic line with eighth and quarter notes. Bass clef has a bass line with eighth and quarter notes. Measure 215: Treble clef has a melodic line with eighth and quarter notes. Bass clef has a bass line with eighth and quarter notes. Measure 216: Treble clef has a melodic line with eighth and quarter notes. Bass clef has a bass line with eighth and quarter notes. The system ends with a double bar line.

216

Handwritten musical score for measures 216-218. The score is written on three staves. The top staff is a single melodic line. The bottom two staves are a grand staff (treble and bass clef). Measure 216 shows a melodic line with eighth and sixteenth notes. Measure 217 continues the melody. Measure 218 features a melodic line with a 'mf' (mezzo-forte) dynamic marking. The grand staff accompaniment consists of chords and single notes, with 'mf' markings in measures 217 and 218.

219

Handwritten musical score for measures 219-221. The score is written on three staves. The top staff is a single melodic line. The bottom two staves are a grand staff (treble and bass clef). Measure 219 shows a melodic line with eighth and sixteenth notes. Measure 220 continues the melody. Measure 221 features a melodic line with a 'ff' (fortissimo) dynamic marking. The grand staff accompaniment consists of chords and single notes, with 'ff' markings in measures 220 and 221.

222

Handwritten musical score for measures 222-224. The score is written on three staves. The top staff is a single melodic line. The bottom two staves are a grand staff (treble and bass clef). Measure 222 shows a melodic line with eighth and sixteenth notes. Measure 223 continues the melody. Measure 224 features a melodic line with a 'ff' (fortissimo) dynamic marking. The grand staff accompaniment consists of chords and single notes, with 'ff' markings in measures 223 and 224.

225

228

231

27

234

Handwritten musical notation for measures 234-236. The system consists of a single treble staff and a grand staff (treble and bass staves). Measure 234 features a treble staff with eighth and sixteenth notes and a grand staff with chords and moving lines. Measure 235 continues the melodic and harmonic development. Measure 236 concludes the system with a final chord in the grand staff.

237

Handwritten musical notation for measures 237-239. The system consists of a single treble staff and a grand staff. Measure 237 begins with a treble staff melody and grand staff accompaniment. Measure 238 shows a continuation of the musical ideas. Measure 239 ends the system with a final chord in the grand staff.

240

Handwritten musical notation for measures 240-242. The system consists of a single treble staff and a grand staff. Measure 240 starts with a treble staff melody and grand staff accompaniment. Measure 241 continues the musical ideas. Measure 242 concludes the system with a final chord in the grand staff.

243

Handwritten musical score for measures 243-245. The system consists of three staves. The top staff is a single melodic line in treble clef. The bottom two staves are a grand staff (treble and bass clefs) for piano accompaniment. The key signature has one sharp (F#). The music features various note values, rests, and dynamic markings.

246

Handwritten musical score for measures 246-248. The system consists of three staves. The top staff is a single melodic line in treble clef. The bottom two staves are a grand staff (treble and bass clefs) for piano accompaniment. The key signature has one sharp (F#). The music features various note values, rests, and dynamic markings, including *mf* (mezzo-forte).

249

Handwritten musical score for measures 249-251. The system consists of three staves. The top staff is a single melodic line in treble clef. The bottom two staves are a grand staff (treble and bass clefs) for piano accompaniment. The key signature has one sharp (F#). The music features various note values, rests, and dynamic markings.

252

Handwritten musical score for measures 252-254. The system consists of three staves. The top staff is a single melodic line in treble clef. The bottom two staves are a grand staff (treble and bass clefs) for piano accompaniment. Measure 252 shows a melodic phrase starting with a sharp sign. Measure 253 features a piano dynamic marking 'f' and a fermata over the piano accompaniment. Measure 254 continues the melodic and harmonic development.

255

Handwritten musical score for measures 255-257. The system consists of three staves. The top staff is a single melodic line in treble clef. The bottom two staves are a grand staff (treble and bass clefs) for piano accompaniment. Measure 255 begins with a piano dynamic marking 'f'. Measure 256 includes a fermata over the piano accompaniment. Measure 257 concludes the system with a final melodic note and a fermata.

258

Handwritten musical score for measures 258-260. The system consists of three staves. The top staff is a single melodic line in treble clef. The bottom two staves are a grand staff (treble and bass clefs) for piano accompaniment. Measure 258 starts with a sharp sign. Measure 259 features a piano dynamic marking 'f'. Measure 260 concludes the system with a final melodic note and a fermata.

Handwritten musical score, measures 261-270. The score is written on three staves (treble, alto, and bass clefs). Measure numbers 261 and 30 are handwritten above the first staff. The notation includes various notes, rests, and accidentals (sharps, flats, naturals). The key signature changes from one flat to two flats between measures 263 and 264.

Handwritten musical score, measures 271-280. The score is written on three staves (treble, alto, and bass clefs). Measure number 264 is handwritten above the first staff. The notation includes various notes, rests, and accidentals. The key signature remains two flats.

Handwritten musical score, measures 281-292. The score is written on three staves (treble, alto, and bass clefs). Measure numbers 267 and 292 are handwritten above the first staff. The notation includes various notes, rests, and accidentals. The key signature remains two flats. The piece concludes with a double bar line and a final chord in measure 292.

270

Handwritten musical score for measures 270-273. The score is written on two staves (treble and bass clef) with a key signature of one flat (B-flat). The notation includes chords, single notes, and slurs. Measure 270 shows a series of chords in the left hand and single notes in the right hand. Measure 271 continues the sequence. Measure 272 features a more complex chordal structure. Measure 273 concludes the system with a final chord and a fermata.

273

Handwritten musical score for measures 274-275. The score is written on two staves. Measure 274 shows a melodic line in the right hand and a chordal accompaniment in the left hand. Measure 275 continues the melodic line and the accompaniment. The notation includes slurs, ties, and dynamic markings such as *mf* (mezzo-forte).

276

Handwritten musical score for measures 276-279. The score is written on two staves. Measure 276 shows a melodic line in the right hand and a chordal accompaniment in the left hand. Measure 277 continues the melodic line and the accompaniment. Measure 278 features a more complex chordal structure. Measure 279 concludes the system with a final chord and a fermata.

32

279

Handwritten musical score for measures 279-282. Measure 279 starts with a treble clef, a key signature of one flat (B-flat), and a common time signature. The melody consists of eighth and quarter notes. The piano accompaniment is in the left hand, featuring chords and single notes. Measures 280-282 continue the melodic and harmonic progression.

282

Handwritten musical score for measures 282-285. Measure 282 starts with a treble clef, a key signature of one flat (B-flat), and a common time signature. The melody consists of eighth and quarter notes. The piano accompaniment is in the left hand, featuring chords and single notes. Measures 283-285 continue the melodic and harmonic progression.

285 rit. — — — — — ♩ = 52

Handwritten musical score for measures 285-288. Measure 285 starts with a treble clef, a key signature of one flat (B-flat), and a common time signature. The melody consists of eighth and quarter notes. The piano accompaniment is in the left hand, featuring chords and single notes. Measures 286-288 continue the melodic and harmonic progression.

33

288

Handwritten musical score for measures 288-290. The system consists of a single treble staff and a grand staff (treble and bass staves). Measure 288 features a treble staff with a half note G4 (sharp) and a whole note F#4. The grand staff has a complex chordal accompaniment with many accidentals. Measure 289 continues the treble staff with a half note G4 (sharp) and a whole note F#4. The grand staff accompaniment changes. Measure 290 shows a treble staff with a half note G4 (sharp) and a whole note F#4. The grand staff accompaniment is also present.

291

Handwritten musical score for measures 291-293. The system consists of a single treble staff and a grand staff. Measure 291 features a treble staff with a half note G4 (sharp) and a whole note F#4. The grand staff has a complex chordal accompaniment. Measure 292 continues the treble staff with a half note G4 (sharp) and a whole note F#4. The grand staff accompaniment changes. Measure 293 shows a treble staff with a half note G4 (sharp) and a whole note F#4. The grand staff accompaniment is also present.

294

Handwritten musical score for measures 294-296. The system consists of a single treble staff and a grand staff. Measure 294 features a treble staff with a half note G4 (sharp) and a whole note F#4. The grand staff has a complex chordal accompaniment. Measure 295 continues the treble staff with a half note G4 (sharp) and a whole note F#4. The grand staff accompaniment changes. Measure 296 shows a treble staff with a half note G4 (sharp) and a whole note F#4. The grand staff accompaniment is also present. The notation includes dynamic markings 'pp' (pianissimo) in the grand staff.

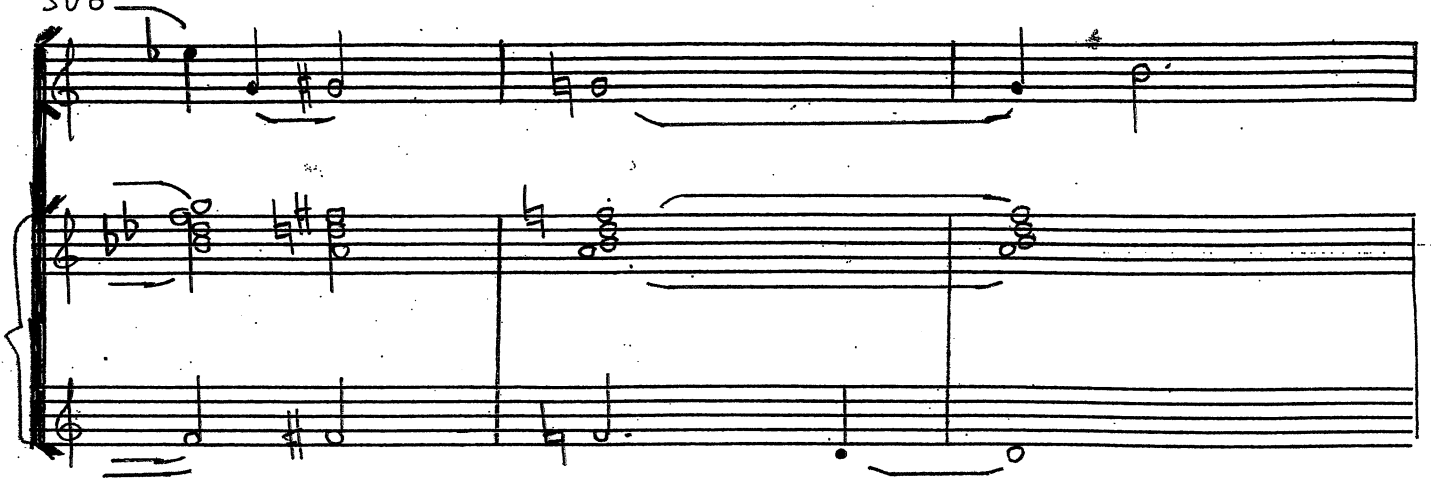
297

Handwritten musical score for measures 297-300. The score is written on a grand staff (treble and bass clefs). Measure 297 starts with a treble clef and a key signature of one sharp (F#). The melody in the treble clef consists of quarter notes: F#4, G#4, A4, B4, C5, D5, E5, F#5. The bass clef accompaniment consists of octaves: F#2, G#2, A2, B2, C3, D3, E3, F#3. Measure 298 continues the melody: G#4, A4, B4, C5, D5, E5, F#5, G#5. The bass clef accompaniment continues: G#2, A2, B2, C3, D3, E3, F#3, G#3. Measure 299 continues the melody: A4, B4, C5, D5, E5, F#5, G#5, A5. The bass clef accompaniment continues: A2, B2, C3, D3, E3, F#3, G#3, A3. Measure 300 continues the melody: B4, C5, D5, E5, F#5, G#5, A5, B5. The bass clef accompaniment continues: B2, C3, D3, E3, F#3, G#3, A3, B3. The score ends with a double bar line and a fermata over the final note.

Handwritten musical score for measures 300-303. The score is written on a grand staff (treble and bass clefs). Measure 300 starts with a treble clef and a key signature of one sharp (F#). The melody in the treble clef consists of quarter notes: F#4, G#4, A4, B4, C5, D5, E5, F#5. The bass clef accompaniment consists of octaves: F#2, G#2, A2, B2, C3, D3, E3, F#3. Measure 301 continues the melody: G#4, A4, B4, C5, D5, E5, F#5, G#5. The bass clef accompaniment continues: G#2, A2, B2, C3, D3, E3, F#3, G#3. Measure 302 continues the melody: A4, B4, C5, D5, E5, F#5, G#5, A5. The bass clef accompaniment continues: A2, B2, C3, D3, E3, F#3, G#3, A3. Measure 303 continues the melody: B4, C5, D5, E5, F#5, G#5, A5, B5. The bass clef accompaniment continues: B2, C3, D3, E3, F#3, G#3, A3, B3. The score ends with a double bar line and a fermata over the final note.

Handwritten musical score for measures 303-306. The score is written on a grand staff (treble and bass clefs). Measure 303 starts with a treble clef and a key signature of one sharp (F#). The melody in the treble clef consists of quarter notes: F#4, G#4, A4, B4, C5, D5, E5, F#5. The bass clef accompaniment consists of octaves: F#2, G#2, A2, B2, C3, D3, E3, F#3. Measure 304 continues the melody: G#4, A4, B4, C5, D5, E5, F#5, G#5. The bass clef accompaniment continues: G#2, A2, B2, C3, D3, E3, F#3, G#3. Measure 305 continues the melody: A4, B4, C5, D5, E5, F#5, G#5, A5. The bass clef accompaniment continues: A2, B2, C3, D3, E3, F#3, G#3, A3. Measure 306 continues the melody: B4, C5, D5, E5, F#5, G#5, A5, B5. The bass clef accompaniment continues: B2, C3, D3, E3, F#3, G#3, A3, B3. The score ends with a double bar line and a fermata over the final note.

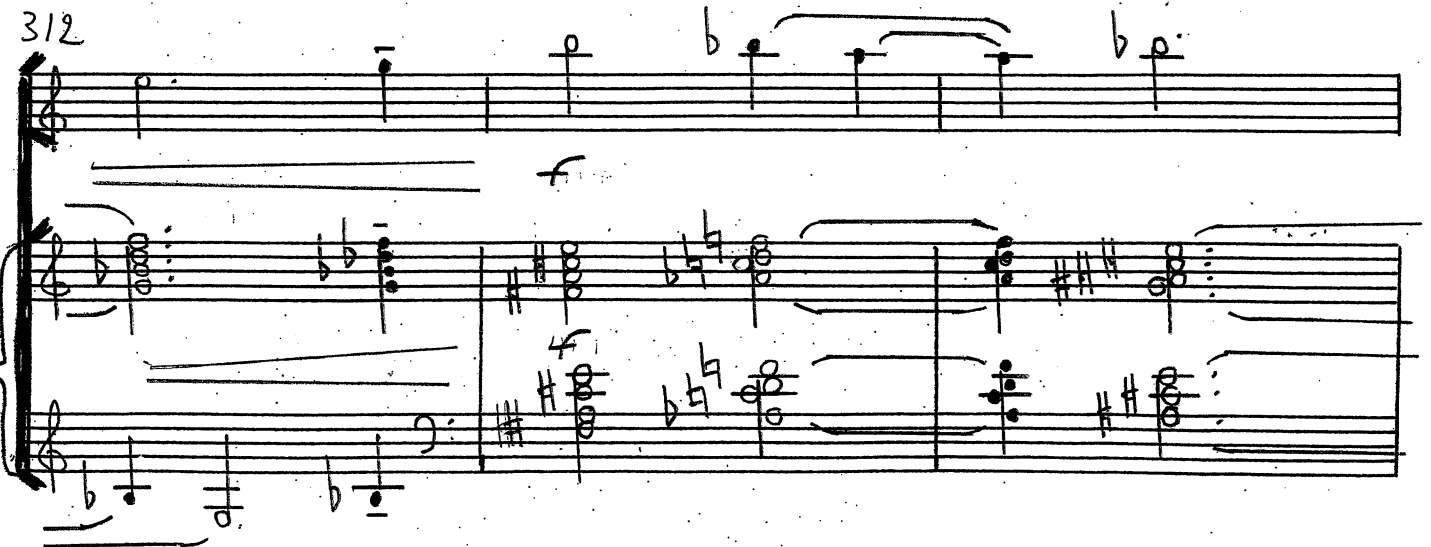
306



309



312



315

Handwritten musical score for measures 315-317. The score is written on three staves. The top staff is a single melodic line in treble clef. The bottom two staves are a grand staff (treble and bass clefs) with chords and some single notes. Measure 315 starts with a key signature of one sharp (F#) and a common time signature (C). Measure 317 ends with a repeat sign.

318

Handwritten musical score for measures 318-320. The score is written on three staves. The top staff is a single melodic line in treble clef. The bottom two staves are a grand staff (treble and bass clefs) with chords and some single notes. Measure 318 starts with a key signature of one sharp (F#) and a common time signature (C). Measure 320 ends with a repeat sign.

321

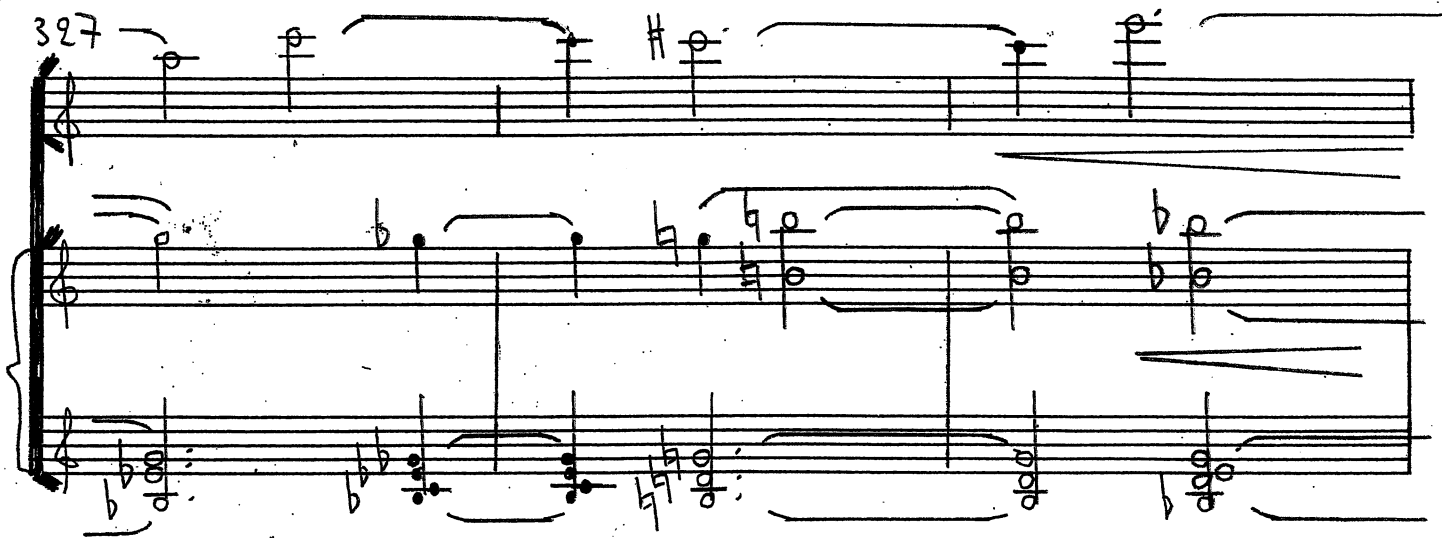
Handwritten musical score for measures 321-323. The score is written on three staves. The top staff is a single melodic line in treble clef. The bottom two staves are a grand staff (treble and bass clefs) with chords and some single notes. Measure 321 starts with a key signature of one sharp (F#) and a common time signature (C). Measure 323 ends with a repeat sign.

37

324



327



330



38

333

Handwritten musical notation for measures 333-335. The top staff is in treble clef with a key signature of one flat (B-flat). It contains a melodic line with eighth and quarter notes, some beamed together. The bottom two staves are in bass clef and are empty.

336

Handwritten musical notation for measures 336-338. The top staff continues the melodic line from measure 333. The bottom two staves are empty.

339

Handwritten musical notation for measures 339-341. The top staff continues the melodic line. The bottom two staves contain complex chordal accompaniment with many beamed notes and accidentals. The dynamic marking 'pp' (pianissimo) is written above the first measure of the bottom two staves.

342

Handwritten musical score for measures 342-344. The score is written on three staves. The top staff is a single melodic line. The bottom two staves are a grand staff (treble and bass clef) with complex chordal accompaniment. Measure 342 starts with a key signature of two sharps (F# and C#). Measure 343 has a key signature change to one sharp (F#). Measure 344 has a key signature change to one flat (Bb). The notation includes various note values, rests, and dynamic markings.

345

Handwritten musical score for measures 345-347. The score is written on three staves. The top staff is a single melodic line. The bottom two staves are a grand staff (treble and bass clef) with complex chordal accompaniment. Measure 345 has a key signature of one flat (Bb). Measure 346 has a key signature change to one sharp (F#). Measure 347 has a key signature change to one flat (Bb). The notation includes various note values, rests, and dynamic markings.

348

rit.

Handwritten musical score for measures 348-350. The score is written on three staves. The top staff is a single melodic line. The bottom two staves are a grand staff (treble and bass clef) with complex chordal accompaniment. Measure 348 has a key signature of one flat (Bb). Measure 349 has a key signature change to one sharp (F#). Measure 350 has a key signature change to one flat (Bb). The notation includes various note values, rests, and dynamic markings.

40

(rit.)

351

$\frac{1}{4} = 40$

354

357

pp

360

363