

CARIN MALMLÖF-FORSSLING

AUM

för sopransolo

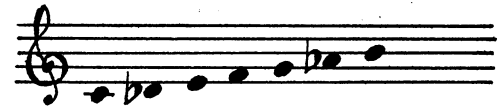
AUM

for soprano solo

AUM

Anvisningar för framförande:

Tonsättningen byggd på den indiska 7-toniga grundskalan bhairava:



Får endast framföras i ett rum med lång efterklang.

— = glissando

A i ordet AUM uttalas som 'a' i 'jag'.

U i ordet AUM uttalas som 'å' i 'våg'.

SH i ordet SHANTI uttalas som 'sj' i 'sjal'.

A i ordet SHANTI uttalas som 'a' i 'jag'.

Ny ton påbörjas alltid innan efterklängen i den föregående tonen helt tonat bort.

AUM representerar det ursprungliga ljudet.

SHANTI (sanskrit) betyder frid.

Directions for performance:

The composition is based on the 7-tone scale from India, bhairava:



To be performed only where the acoustics provide for a long resonance.

— = glissando

A in the word AUM is pronounced [a:] as in 'far'.

U in the word AUM is pronounced [ɔ:] as in 'fall'.

SH in the word SHANTI is pronounced [ʃ] as in 'ship'.

A in the word SHANTI is pronounced [a:] as in 'far'.

A new tone is always begun before the resonance of the preceding tone has completely faded out.

AUM represents original, primal sound.

SHANTI (Sanskrit) means "peace".

Till Kristine kyrka

AUM

CARIN MALMLÖF-FORSSLING

U

A-U

A-U

A U A A-U A A A U A A-U A-U M, A-U M, A-U M,

A A A U M A A A A-U M SHAN TI SHAN

TI A A A U M A A A U U U U U U U U U

U U AU M A A AU M A A A

(c:a 10'') c:a 14'' c:a 10''
f, *p sub* *mf*, *p sub*
 U — M A — U — M U — AU — M SHAN — TI —
 c:a 10'' c:a 6'' c:a 8'' c:a 7''
mf, *p sub* *mf*, *p sub* *mf*, *p sub*
 SHAN — TI — A — U — M — AU — M — A — M —
 c:a 12'' c:a 7'' c:a 14''
mp, *p sub* *mp*, *p* *mf*
 A — U — M U — AU — M U —
p sub
 AU — M — ∞

Durata c:a 8'